

Uncovering the Truth About Base Loads

Results from Mountain View, CA

HEA automatically analyzed PG&E SmartMeter data from 950 Mountain View homes in 2011 and 2012.

- ✓ Base loads can be quickly and accurately computed from interval data.
- ✓ Base loads vary widely and are not well-correlated to
 - Total energy use
 - Home size
 - Home age
- ✓ Base loads can be reduced through simple and inexpensive measures

Energy Consumption Trends

based on bill dated April 10, 2013

Annual Energy Cost
\$2,146

↓ 0.4%

since you registered on 1/10/11

Energy cost of your household in the past 12 months. Percentage change is based on comparison to the benchmark, which is the year prior to your registration.

Home Idle Mode
460 Watts

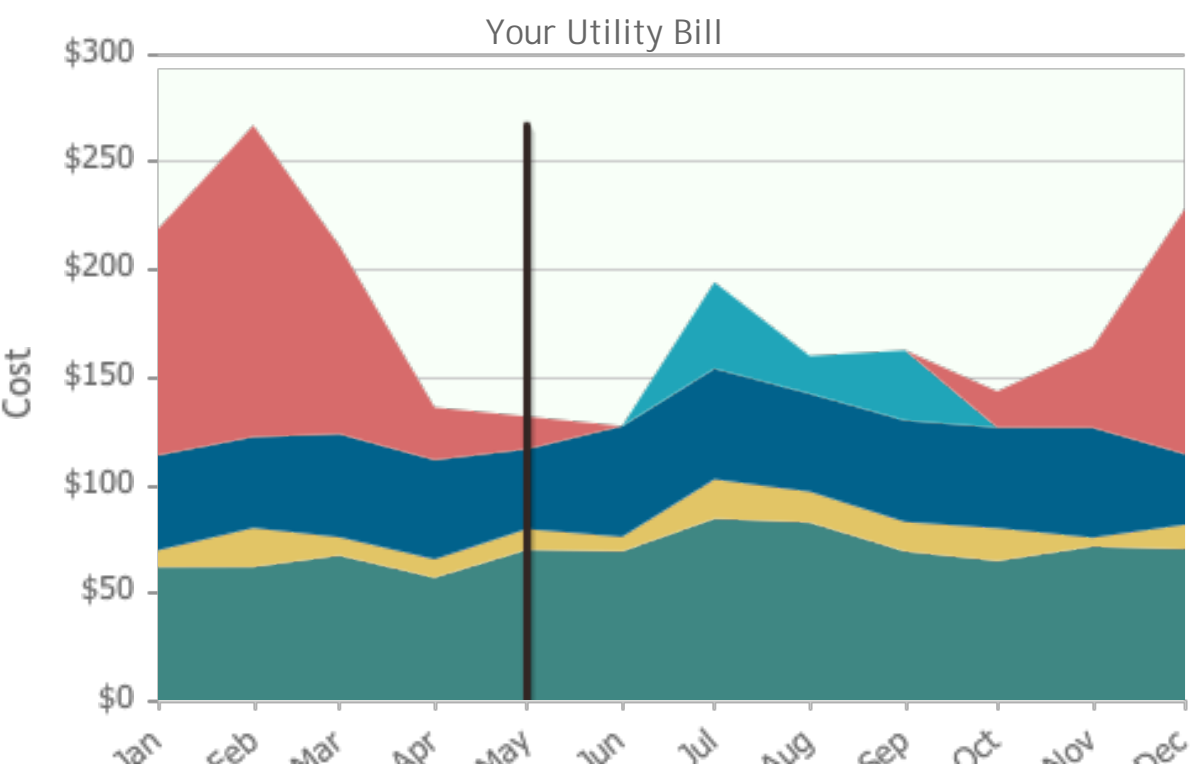
↑ 2.2%

since you registered on 1/10/11

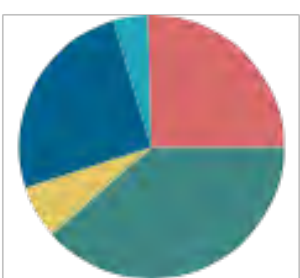
The amount of electricity your home consumes every hour of every day.

Energy Profile

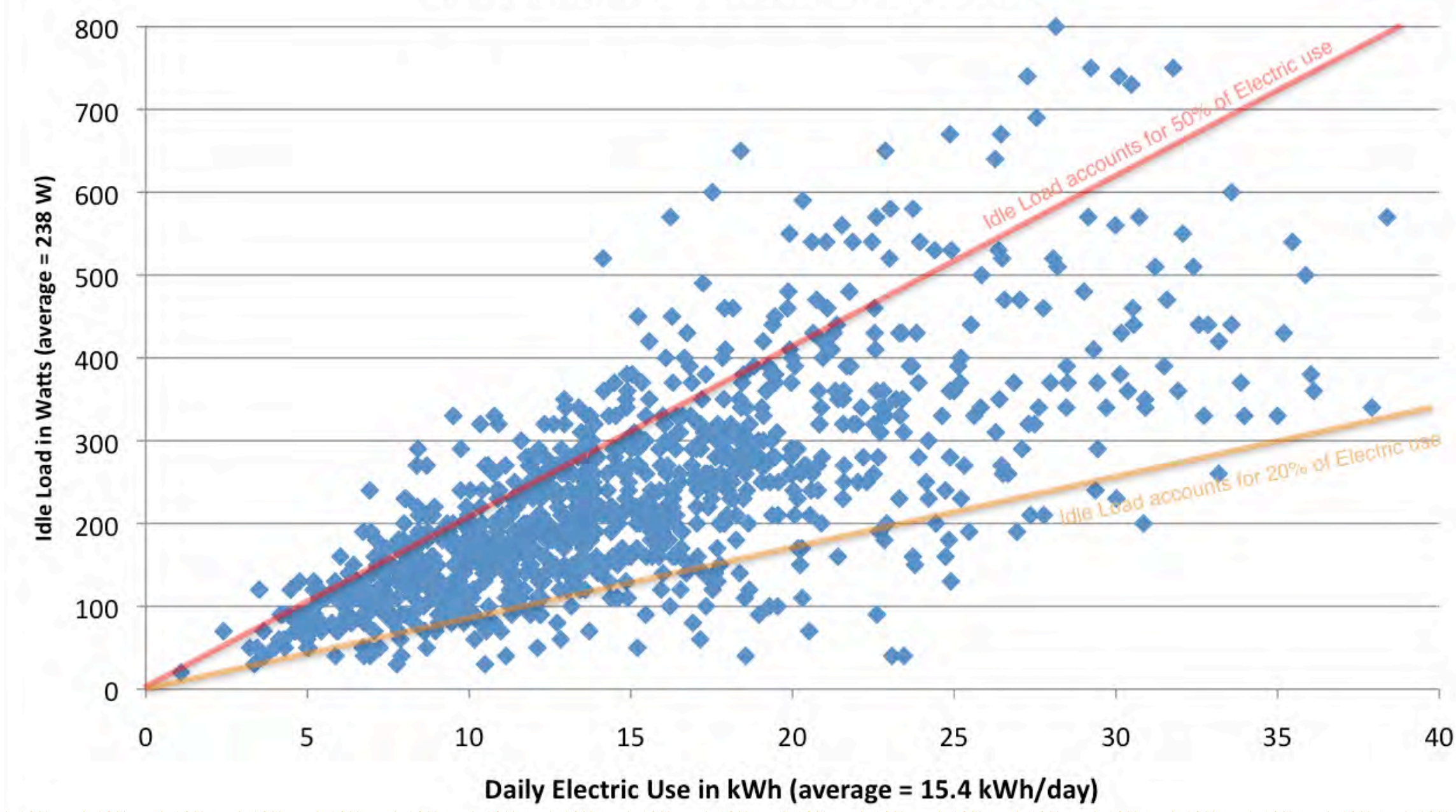
based on past 12 months



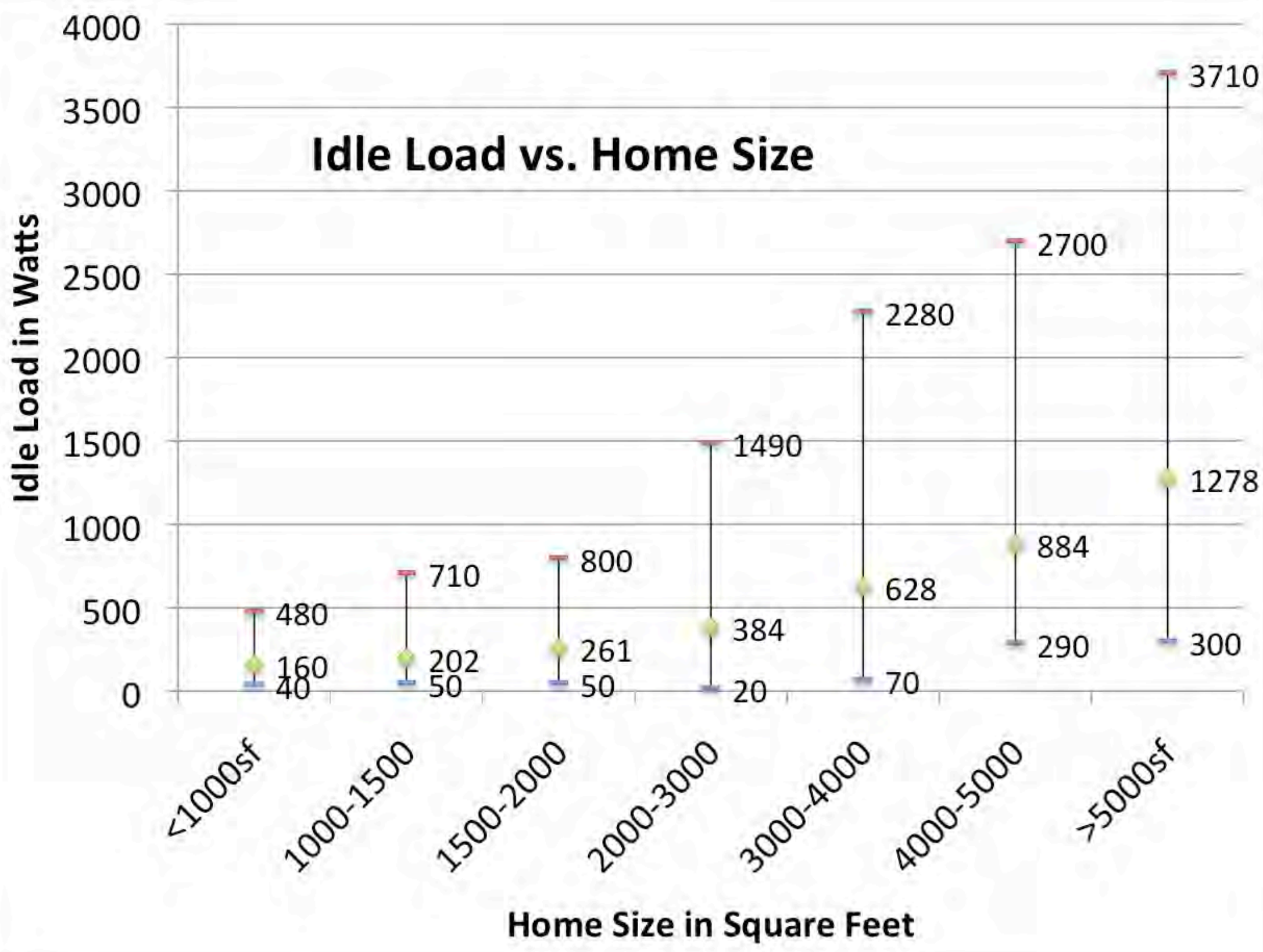
Winter Heating	\$543	25%
Summer Cooling	\$90	4%
Variable	\$541	25%
Recurring	\$137	6%
Base	\$824	38%



Idle Load (W) vs. Daily Electric Use (kWh)
in Mountain View Homes (n=950)

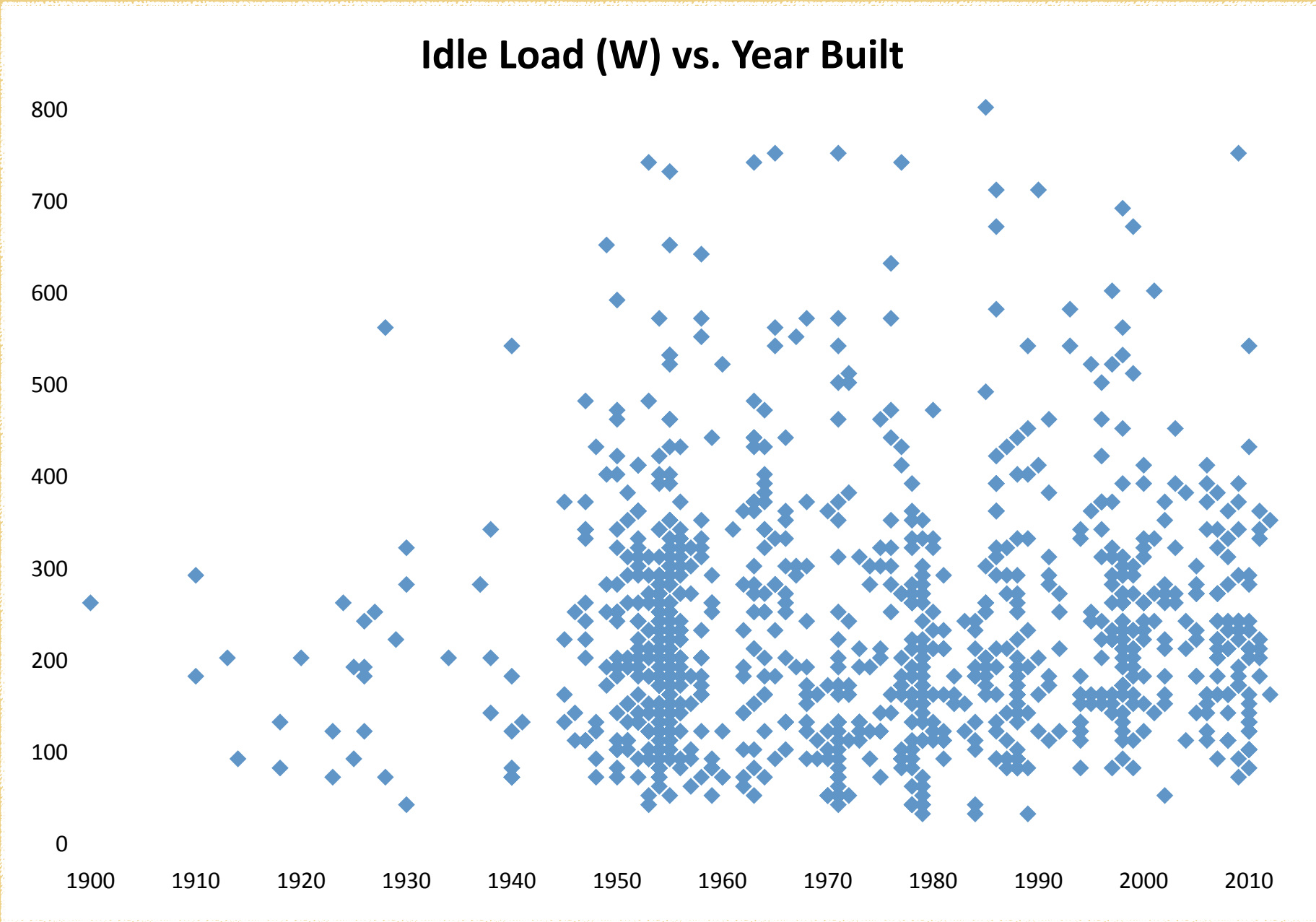


Idle Load vs. Home Size

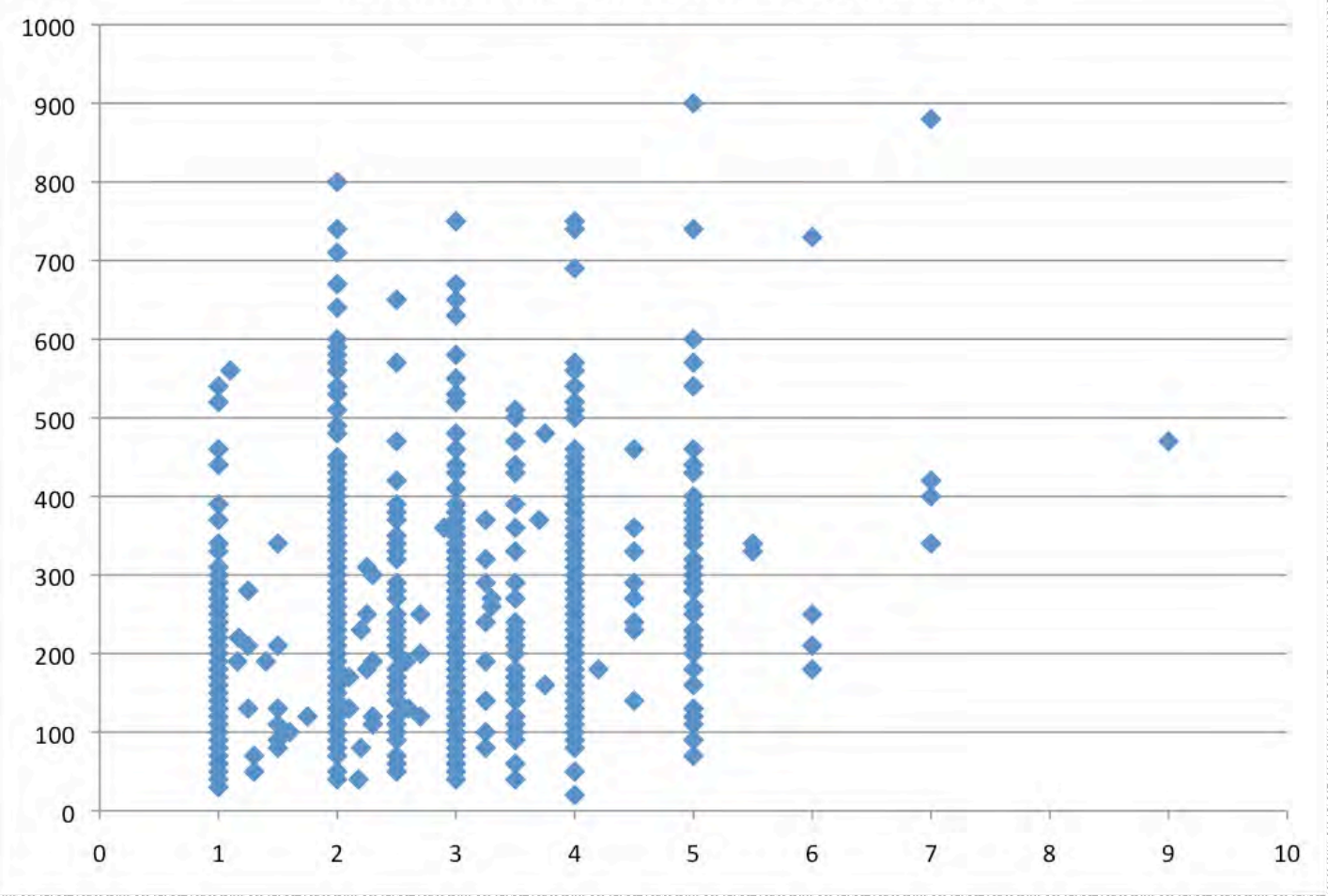


Data from 950 Homes

Idle Load (W) vs. Year Built



Idle Load (W) vs. Occupancy
in Mountain View Homes (n=950)



Idle Load Savings watts Normalized	Single Family		Townhouse or Condo		Apartment	Duplex		Totals
	Owned	Rented	Owned	Rented		Owned	Rented	
High Energy	15	25	21	49	+17	+43	+8	16
House Call	16	16	20	+57	34	32	38	18
ENVI	19	107	21	+15		+150		20
EUCA	+18							+18
Completed Navigator	9	27	19	32	90	+2	10	14
Totals								16