

2009 Utility Forum Data Center Solution

Stephen Blynn

Vision Service Plan

Rancho Cordova, California

May 7, 2009



VSP's Sustainability Mission



VSP is committed to **sustainability**, and to be a **leader** for other business organizations and the community. Our goal is to improve environmental quality through operational excellence.

- conserve energy
- reduce waste
- reuse materials
- recycle

What's Our Motivation?

VSP's Commitment to Corporate Social Responsibility



**People
(Social)**



**Profits
(Economic)**



**Planet
(Environmental)**

VSP Building HQ1

HQ1 at a glance:

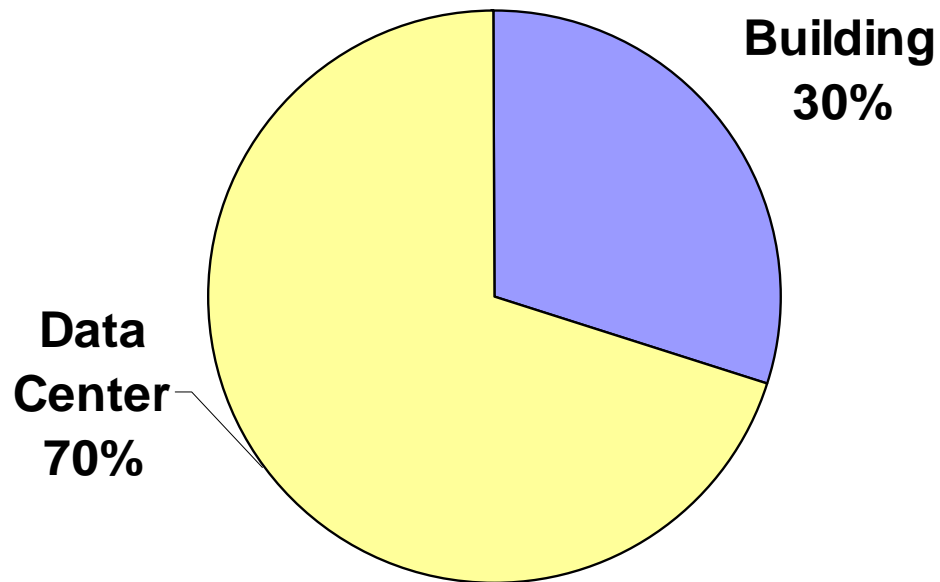
- 152,000 SF
- 9,700 SF Data Center
- 17 years old
- Begin July 2007



SAVING ENERGY



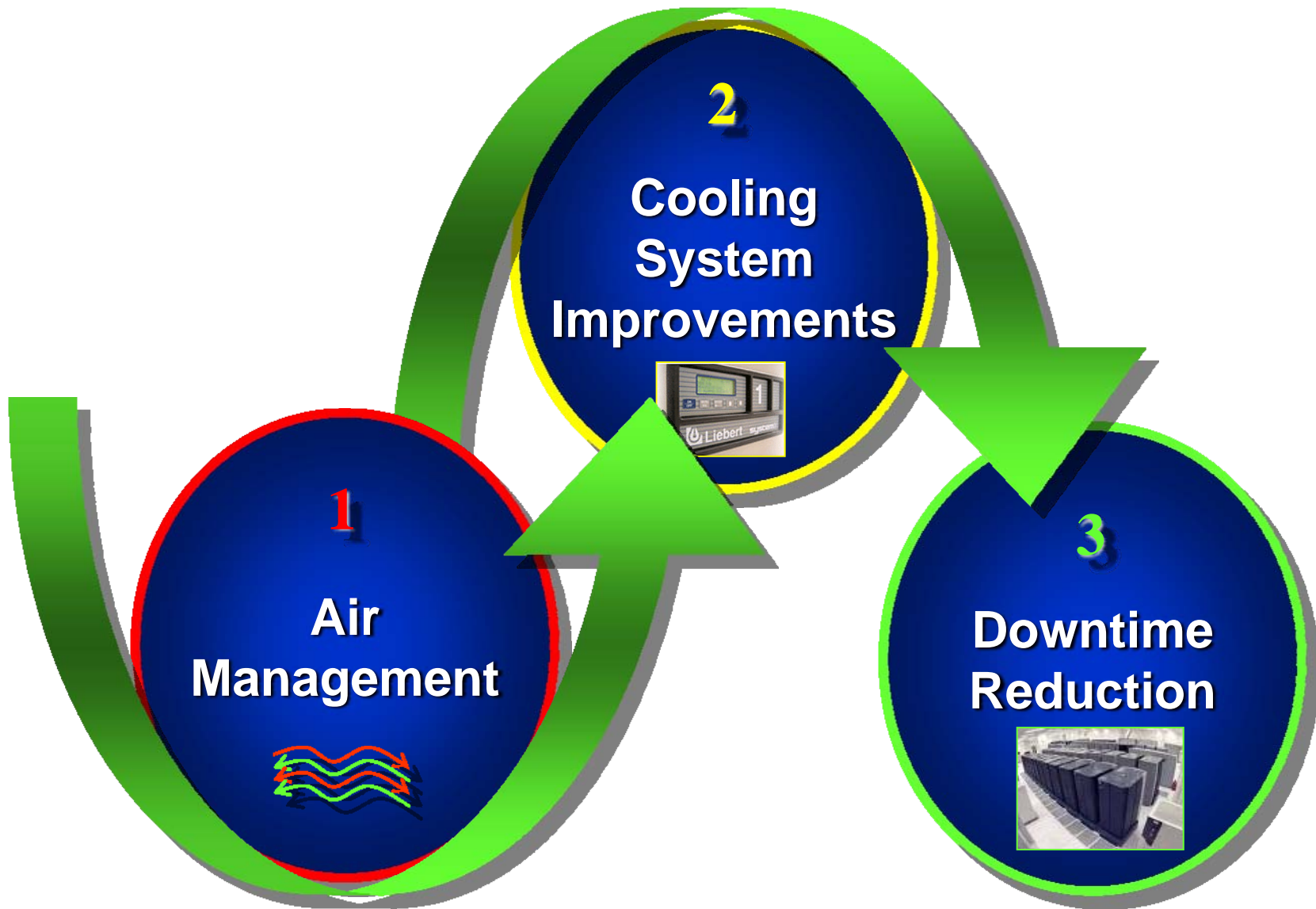
Our First Hurdle: The Energy Star Score



Data Center Monitoring & Optimization

- Objectives
- Opportunities
- Options
- Return On Investment

The Path to the Green Data Center



VSP Return on Investment Summary

Monitoring & Containment

SynapSoft 4.0 Environmental Monitoring	\$	22,184
Cold Aisle Containment	\$	31,911
Blanking Plates/Koldloks	\$	8,152
Total Cost	\$	<u>62,247</u>

Adaptive Cooling - Control

VFDs, Liebert NICs & Network	\$	16,103
Control Implementation & Commissioning	\$	4,400
Total Cost	\$	<u>20,503</u>

Total VSP Project Cost	\$	82,750
SMUD Incentive (Capped at 35% of Project Cost)	\$	28,962
VSP Out of Pocket Spend	\$	<u>53,787</u>

Annual Energy Savings (Conservative Estimate)	\$	23,000
Simple Payback - Months		28.1

One Solution – Three Vectors

Cooling

Balance Cooling Capacity

Optimize:
Optimization

Air Pressure & Flow

CRAC Utilization

Power

Improve Energy Management

UPS Capacity Planning

Balance
Energy Baseline

Metrics – PUE / DCIE

Operations

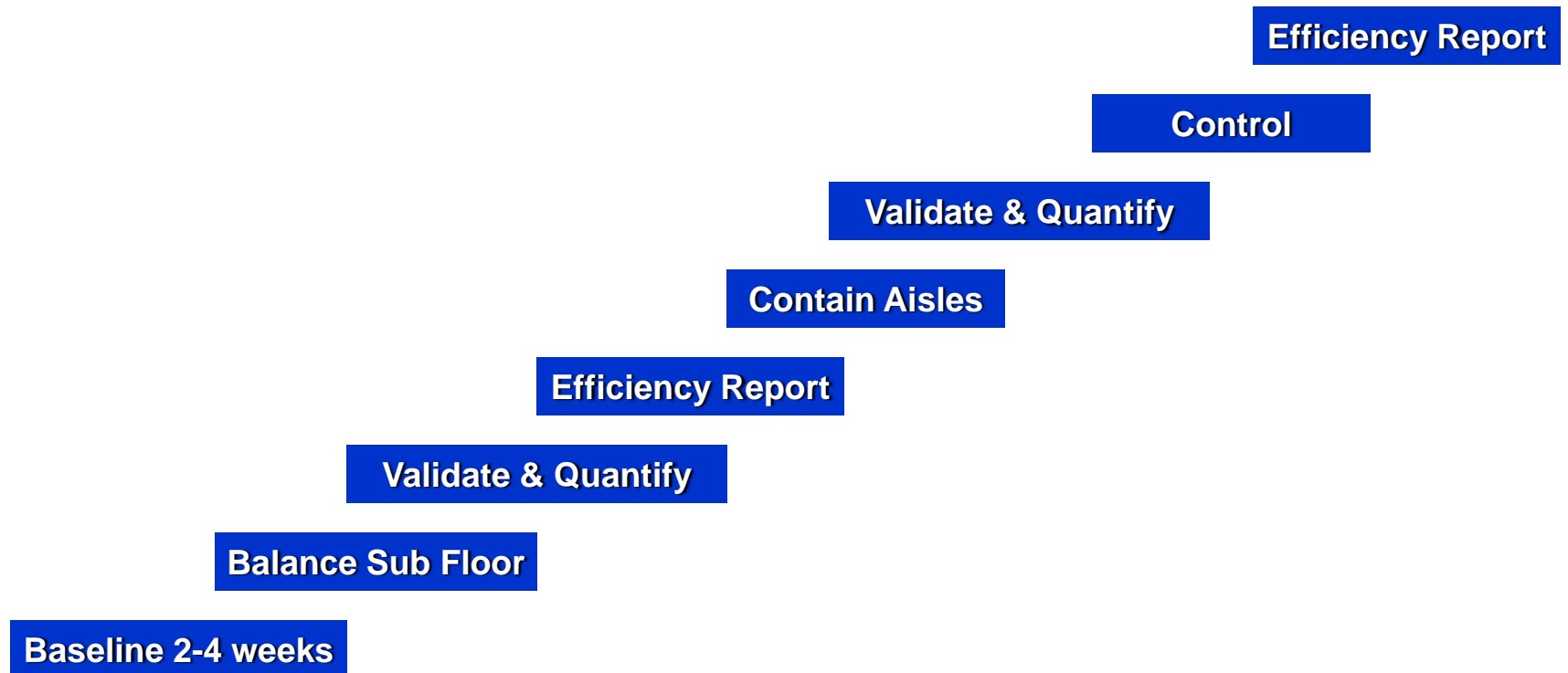
Synergize IT & Facilities – *One Dashboard*

Efficiency
Integrated Tool Suite

Optimized Capacity Planning

Balanced IT & Infrastructure

Typical Optimization Timeline



SynapSoft™ 5.0 Visibility Solution

Complete Solutions

Infrastructure

- SynapSoft™ 4.0 Resiliency Software
- Wireless Sensor Network
- Sensor Instrumentation
 - ~ 450 SP / 10K sf
 - Temp / RH / Pressure
 - Power Metering
- Network Gateway

Operations

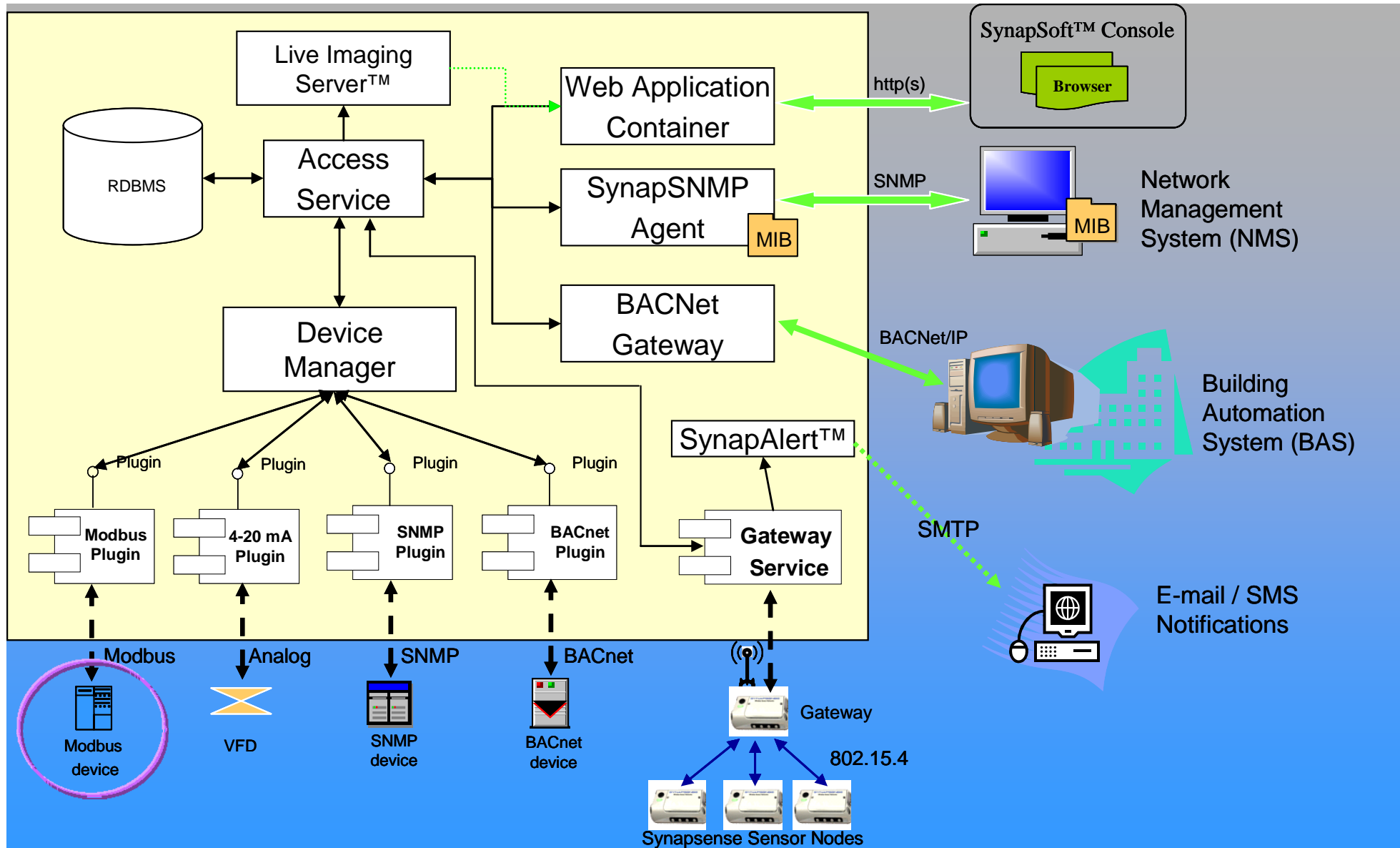
- 24/7 Visibility
 - Alerts
 - Alarms
- Data Trending
- Data Archiving
- Live Imaging™
- Global Visualizations

Service & Support

- Installation
- Technical Support & Online Account
- Maintenance
- Training – online & post-install onsite
- Green Data Center Assessment

SynapSense Solution Overview

Architectural Overview



Sensor Types

Chilled Water Flow

Branch Circuit Monitoring

Energy Metering

Leak
Detection

Air Pressure

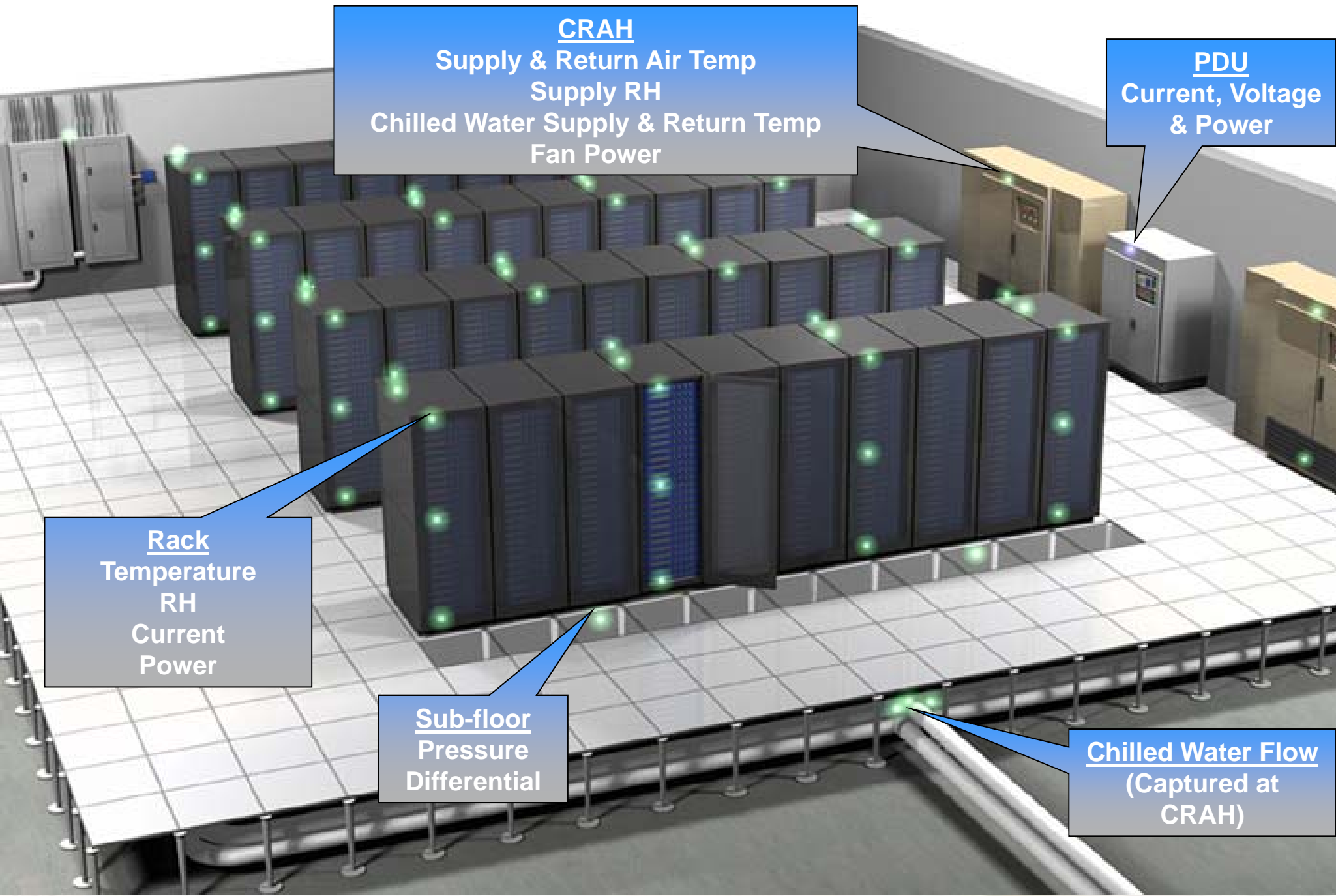
Rack Thermals

Room Relative Humidity

Door Status



Solution Overview



CRAH
Supply & Return Air Temp
Supply RH
Chilled Water Supply & Return Temp
Fan Power

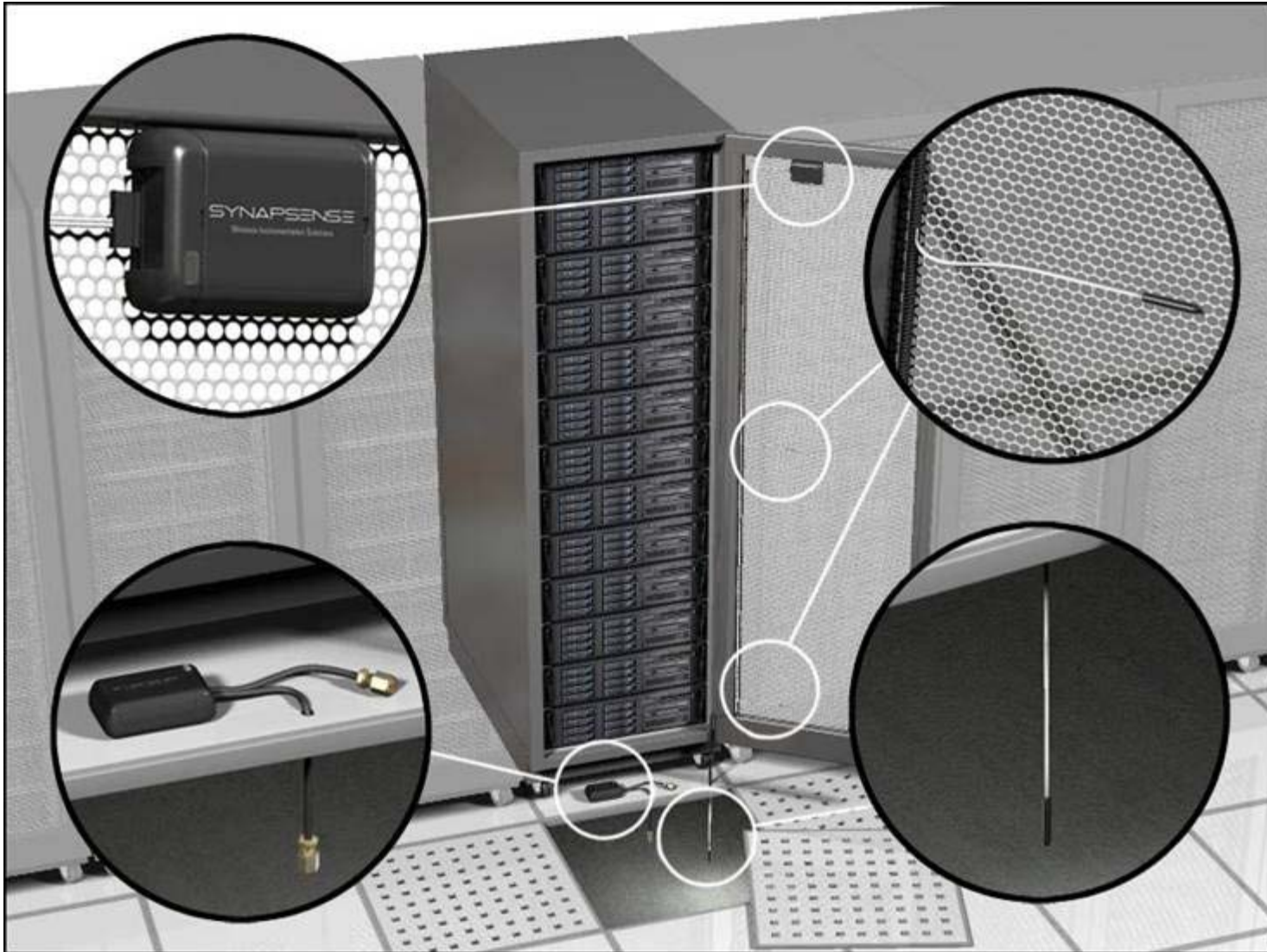
PDU
Current, Voltage
& Power

Rack
Temperature
RH
Current
Power

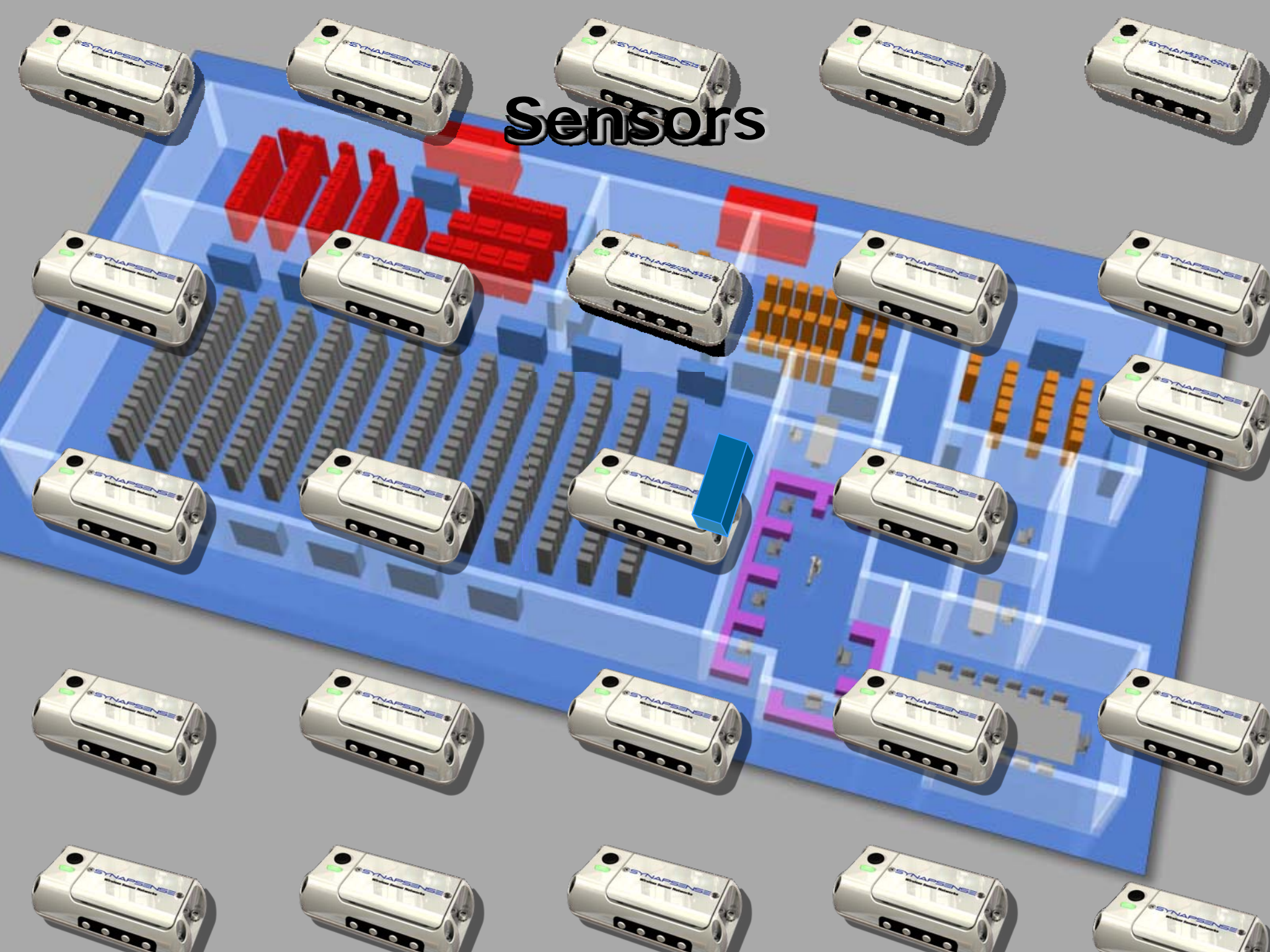
Sub-floor
Pressure
Differential

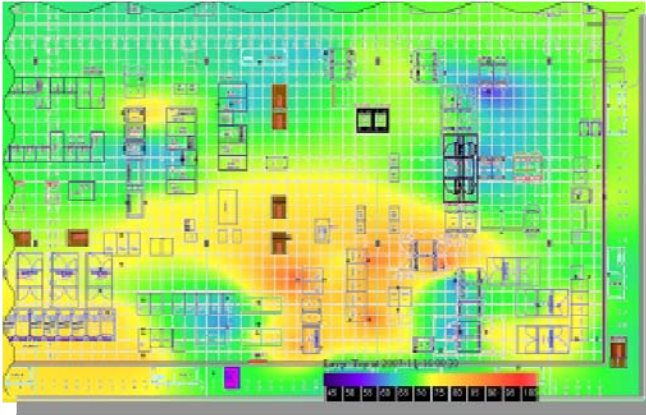
Chilled Water Flow
(Captured at
CRAH)

Location of Node, Thermistors and Pressure Sensors



Sensors

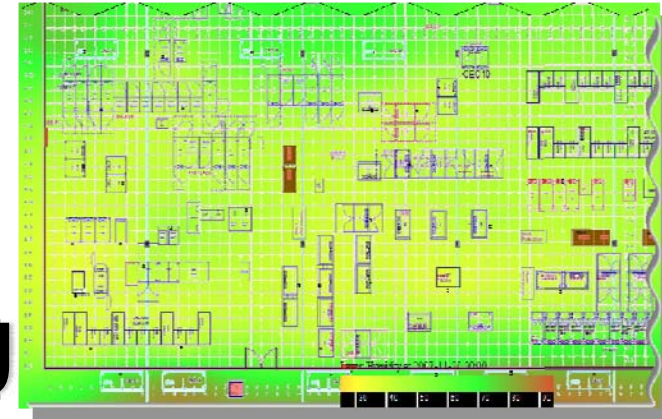




2D Thermal Map



2D Pressure Map



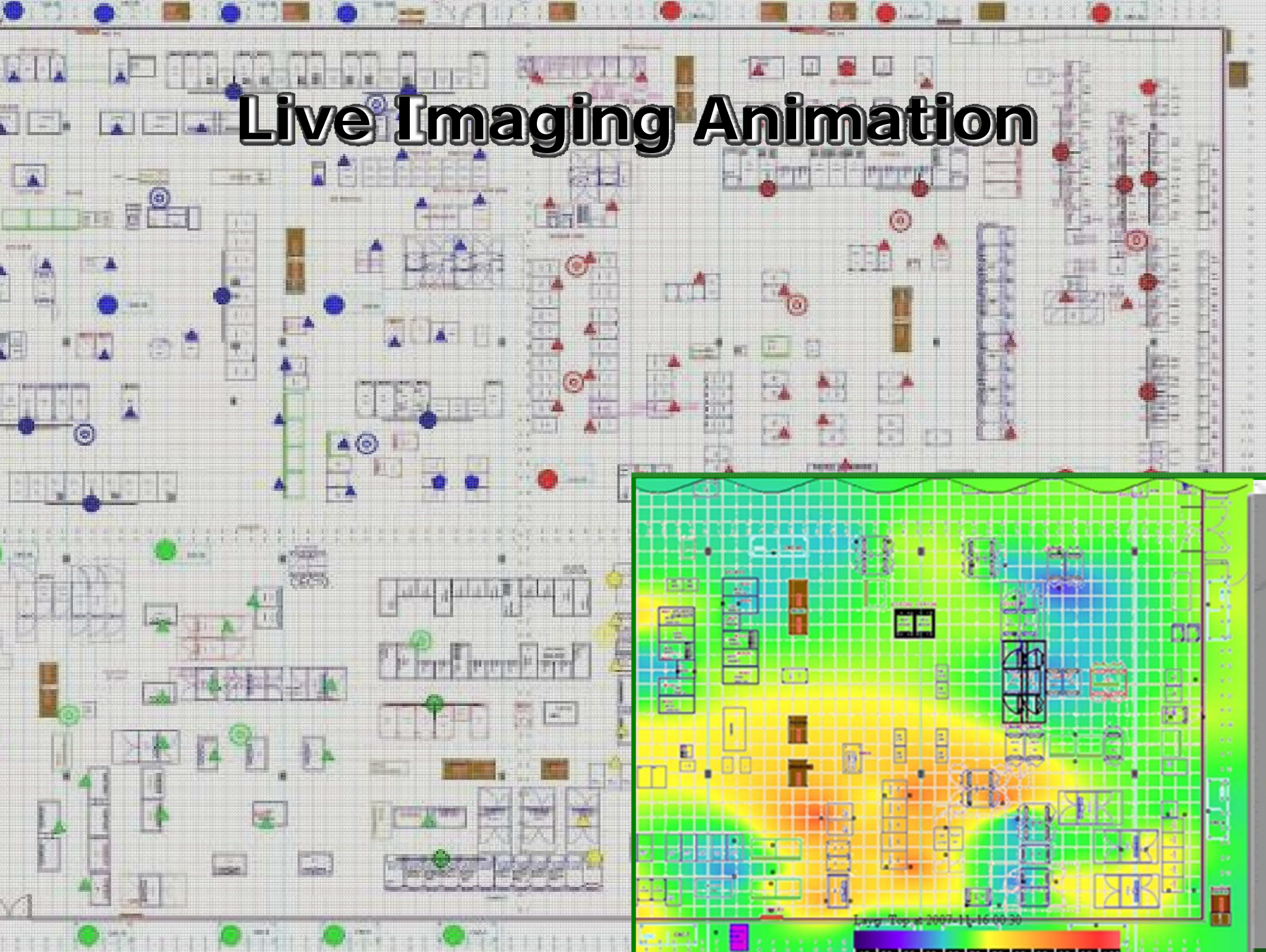
2D Humidity Map

Live Imaging

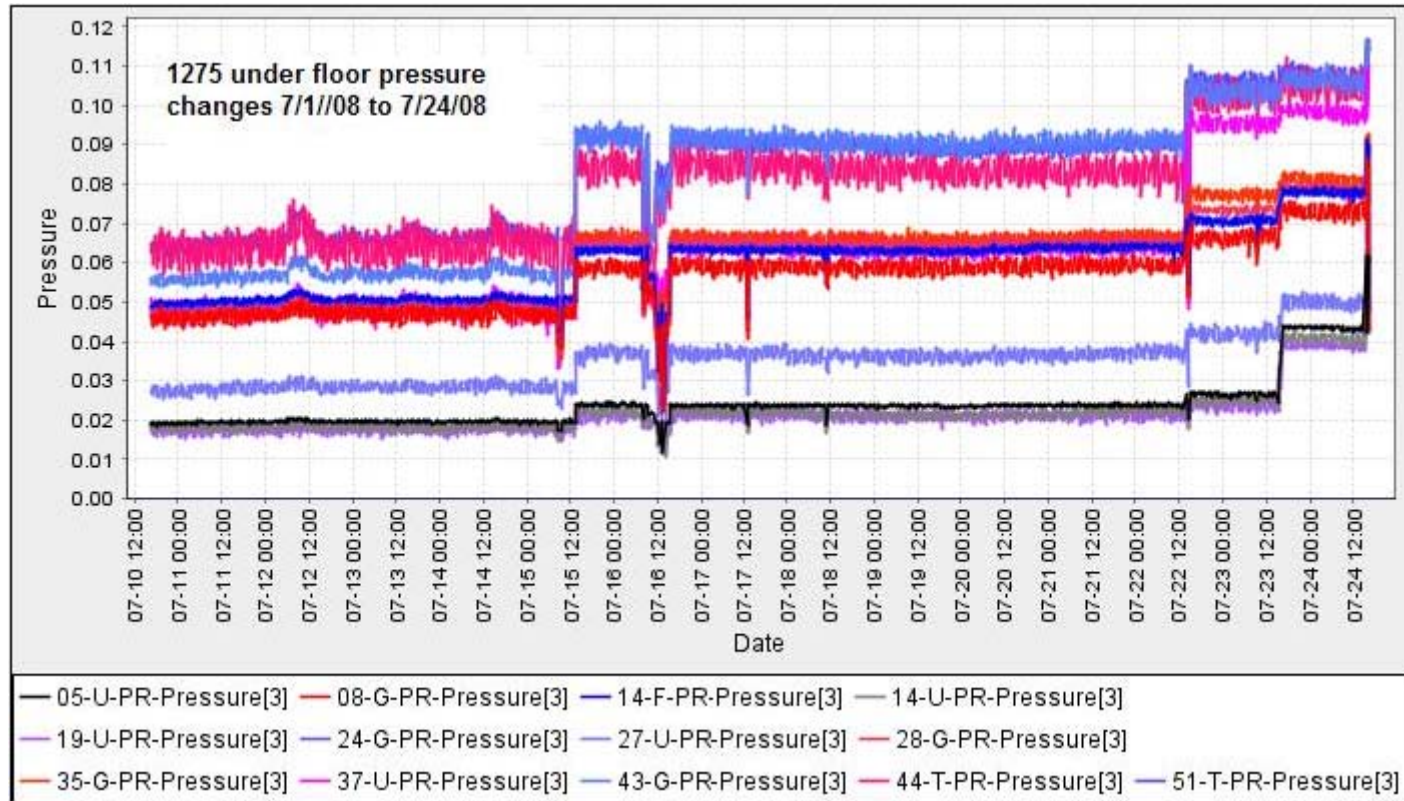
Ground-breaking 2D maps use your real-time data center analytics to create a visual description of your environment.

Live Environmental Imaging™ is a special service for SynapSense customers.

Live Imaging Animation

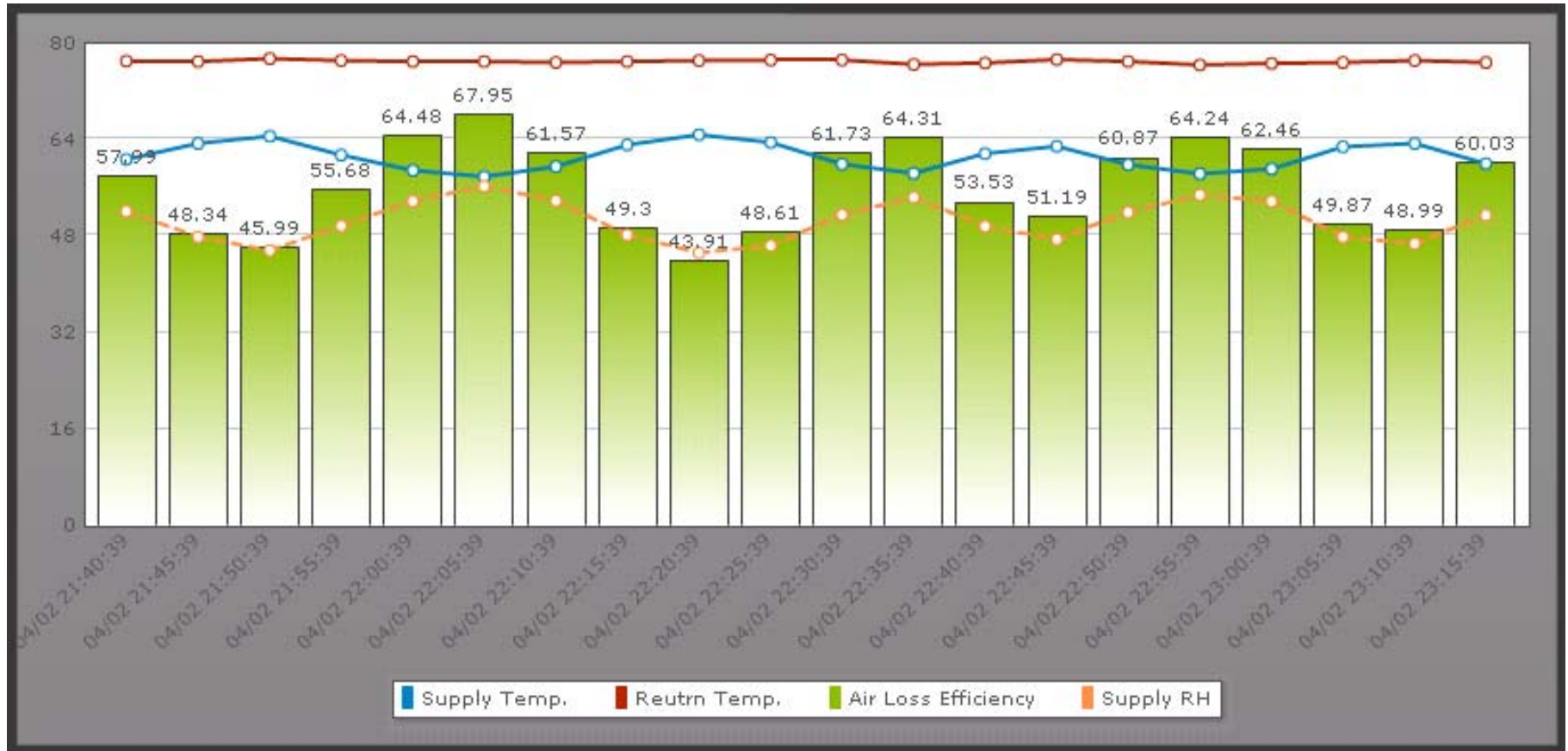


Charting



**Make changes to improve plenum pressure,
balance the floor and know the results!**

CRAC Efficiency Profile

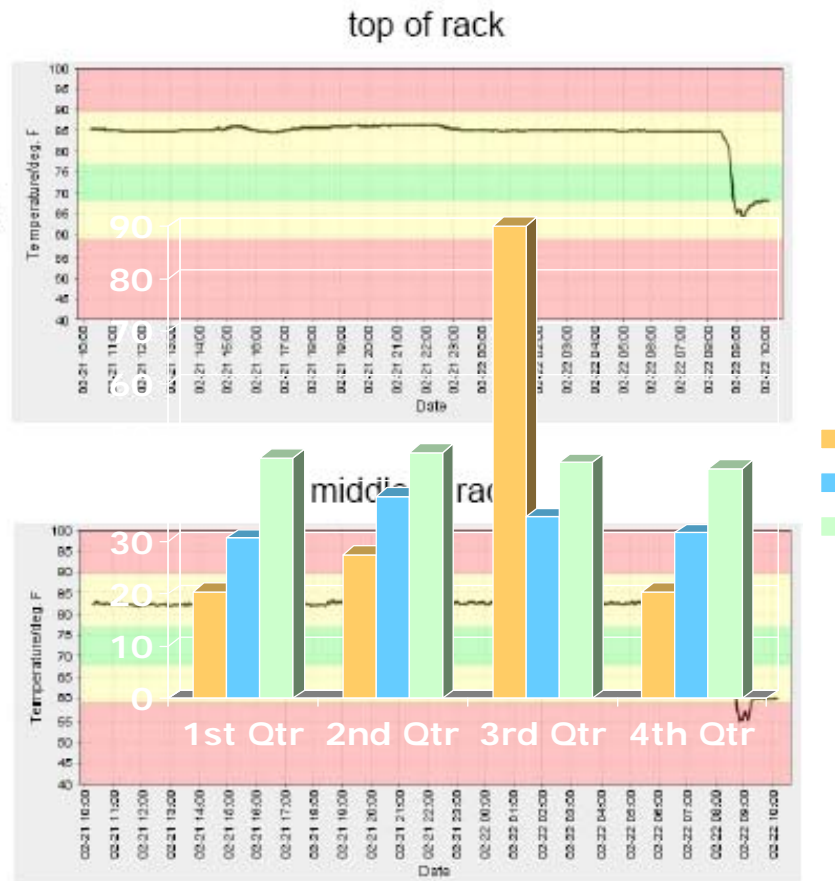


Impact of Humidification Cycles

Remediation Results

Results: Blanking Panels

- One blanking panel added and temperature dropped $\sim 20^{\circ}$
- impact of other best practices confirmed
 - eliminate leaks in floor
 - improve air management



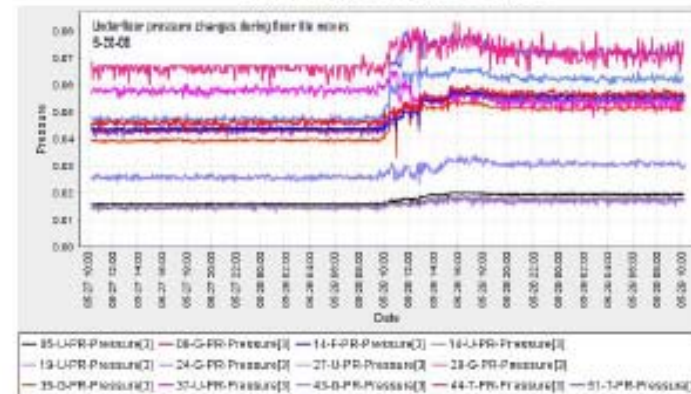
Remediation Results

Results: Tune Floor Tiles



- Too many permeable floor tiles
- if airflow is optimized,
 - under-floor pressure \uparrow
 - rack-top temperatures \downarrow
 - data center capacity grows
- Measurement and visualization assisted tuning process

under-floor pressures

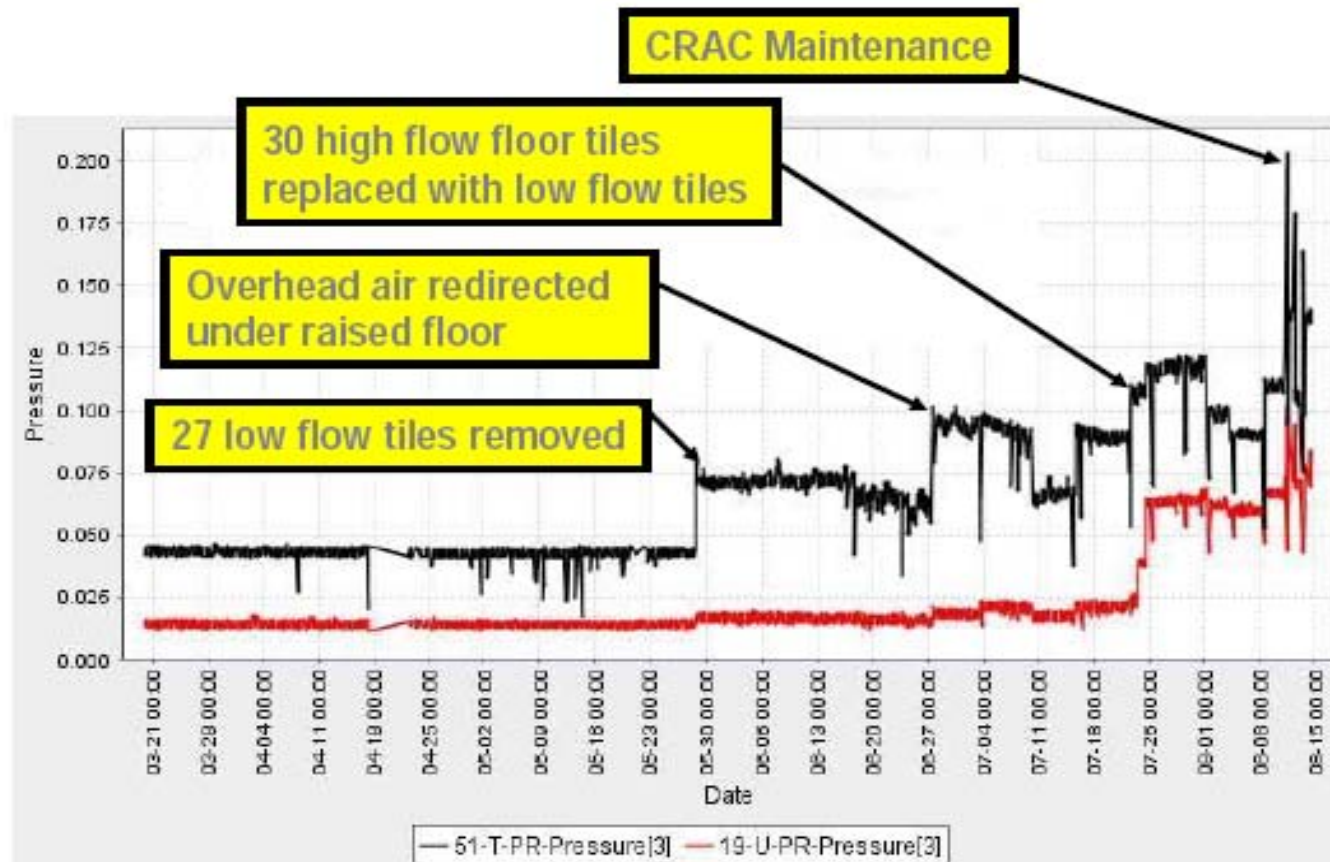


rack-top temperatures



Remediation Results

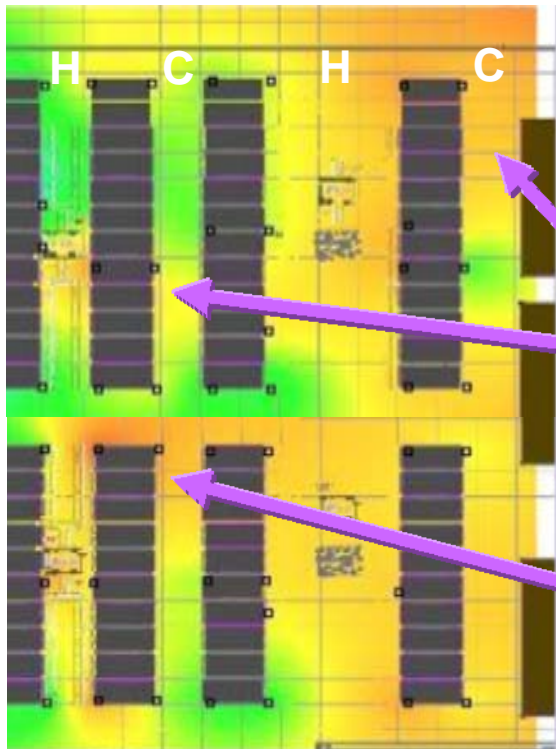
Documenting Progress



5 months of floor pressure management

Environmental Baseline & Results SynapSense Thermal LiveImaging™

Baseline



No Containment

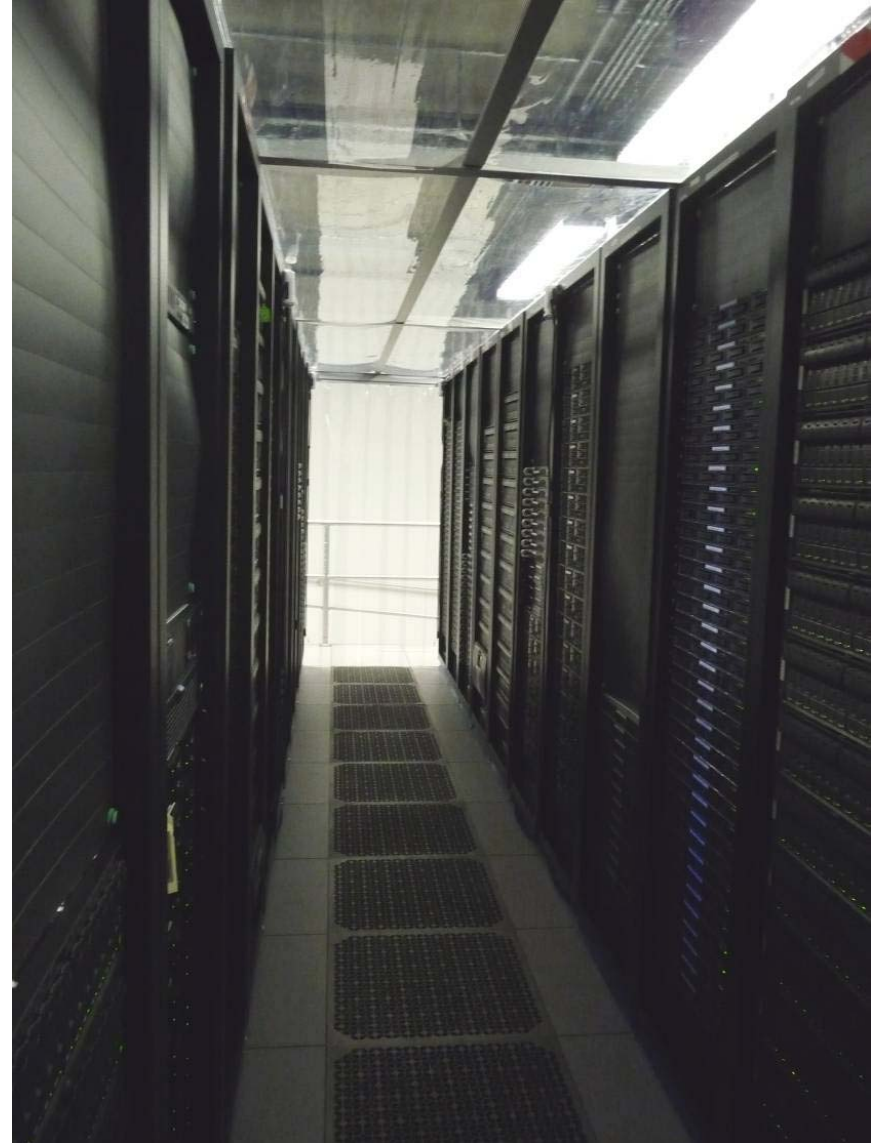
High Degree of Air Mixing

High Inlet Temperatures

Map Legend:

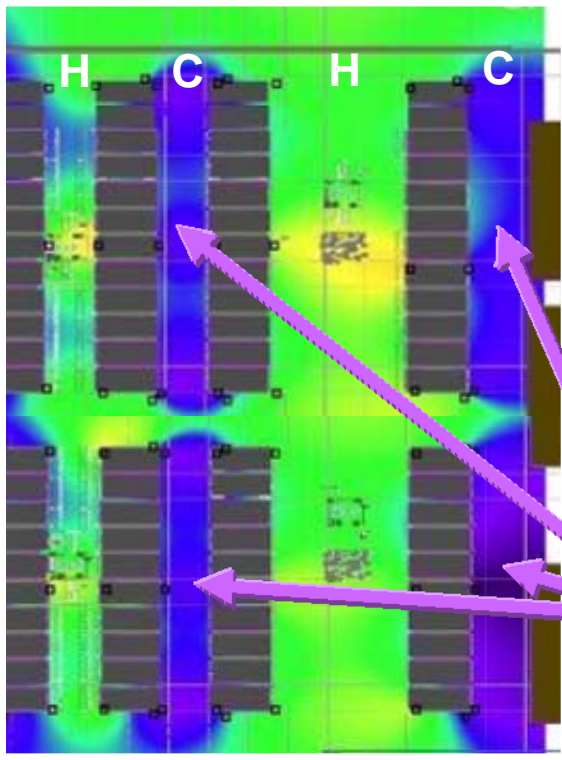


Cold Aisle Containment



Environmental Baseline & Results SynapSense Thermal LiveImaging™

After Containment



Cold Aisles Contained

No Change to CRAHs

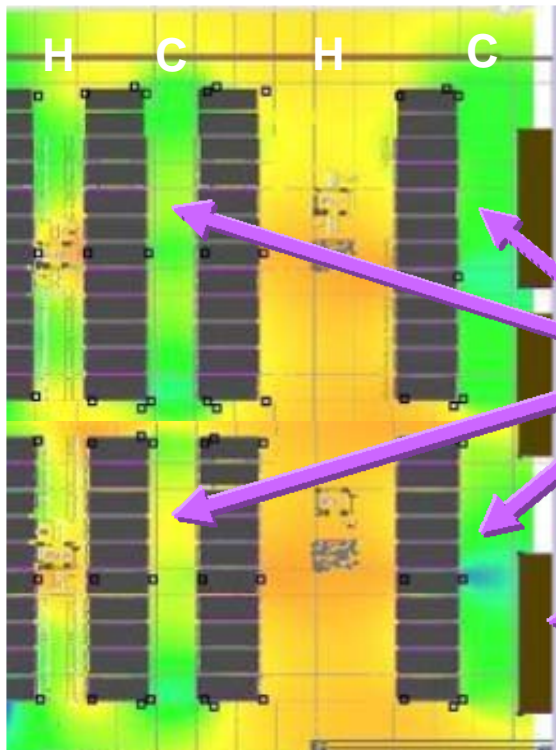
Overcooled

Map Legend:



Environmental Baseline & Results SynapSense Thermal LiveImaging™

With Control



Controlled CRAHs

ASHRAE Inlet Temperatures

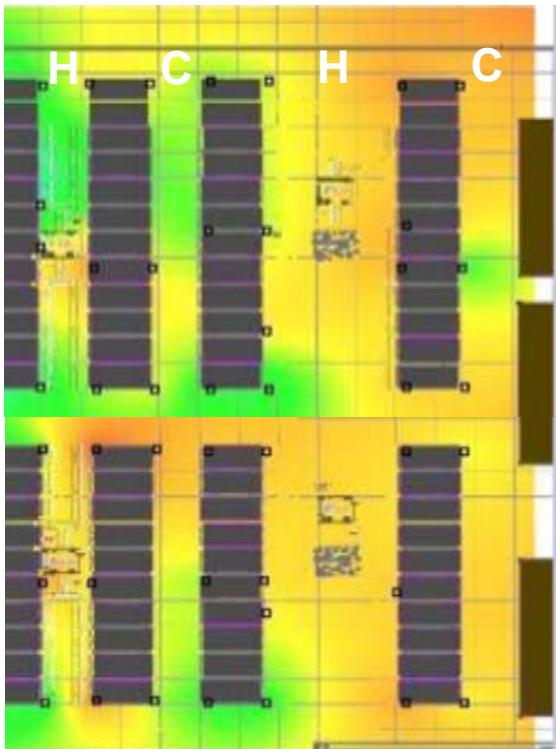
Increased Return Temperatures

Map Legend:

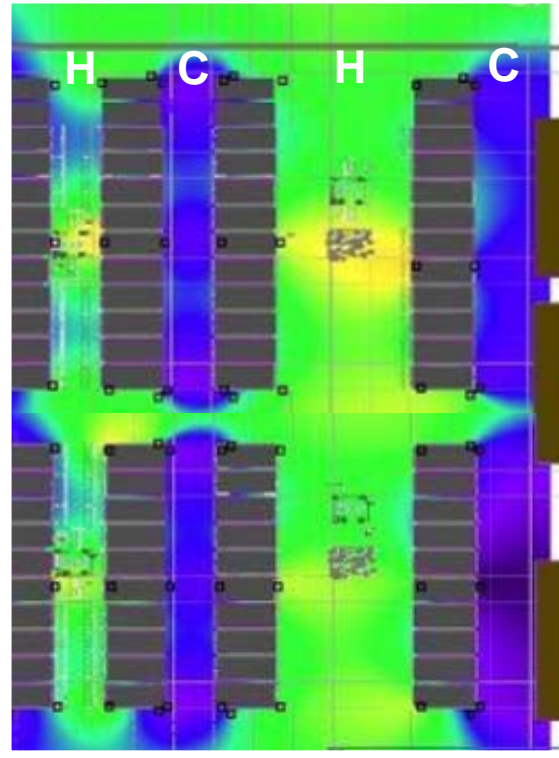
130 145 160 175 190 205

Environmental Baseline & Results SynapSense Thermal LiveImaging™

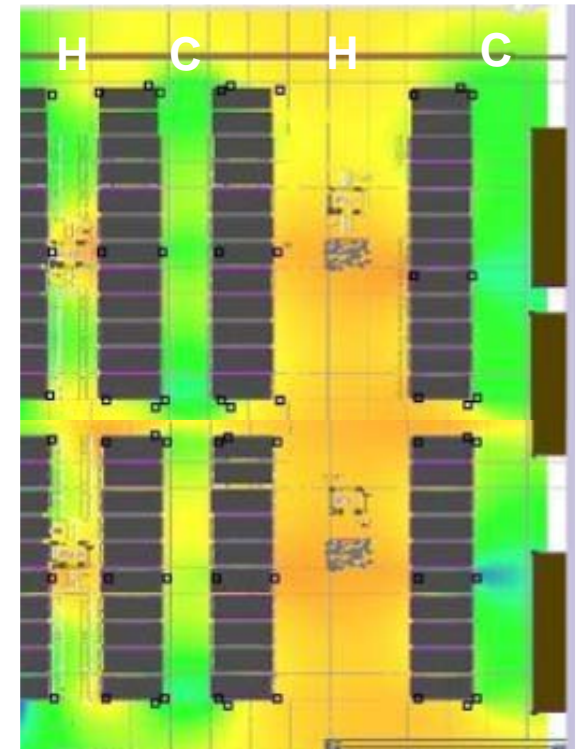
Baseline



After Containment



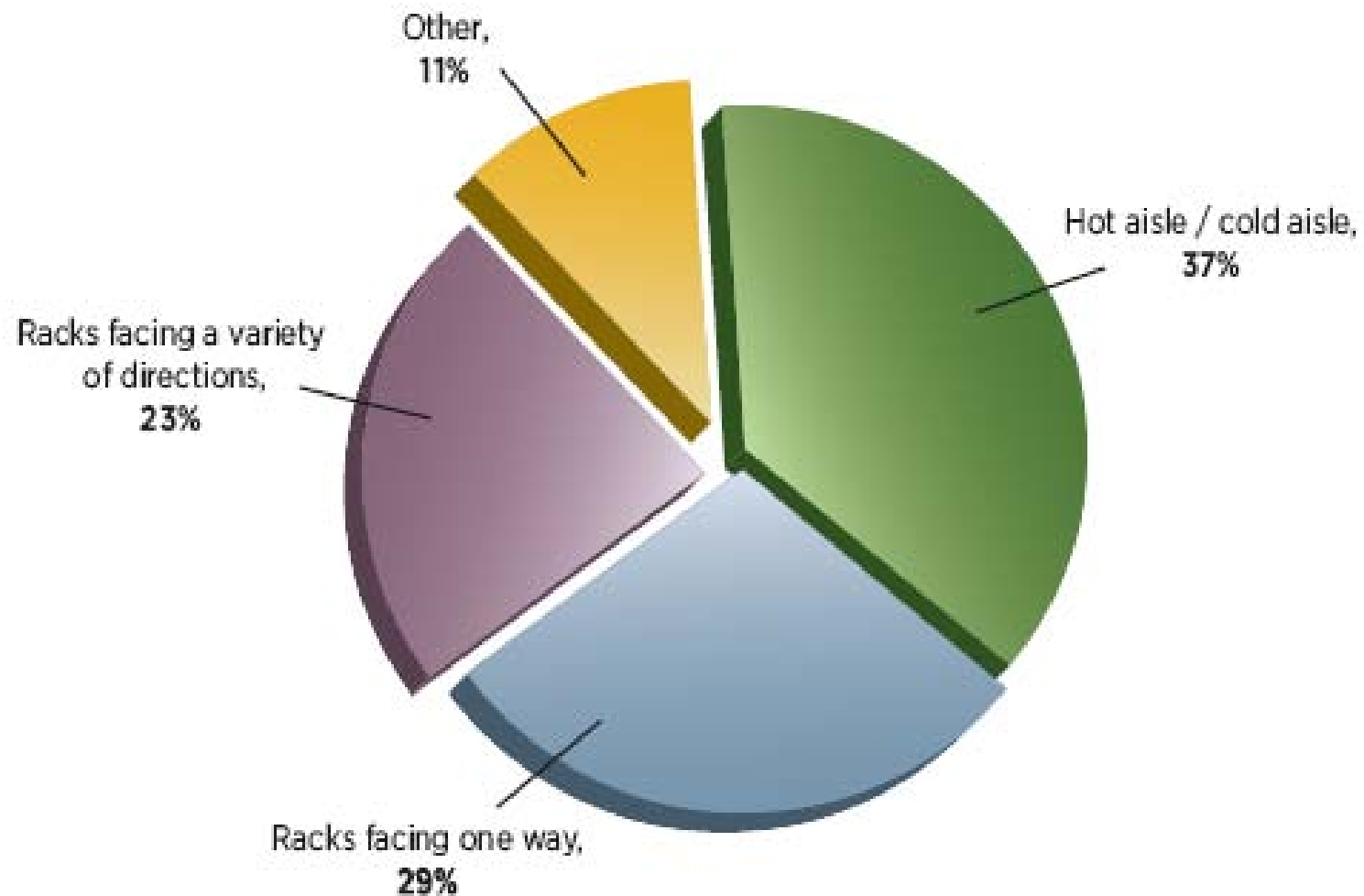
With Control



Map Legend:

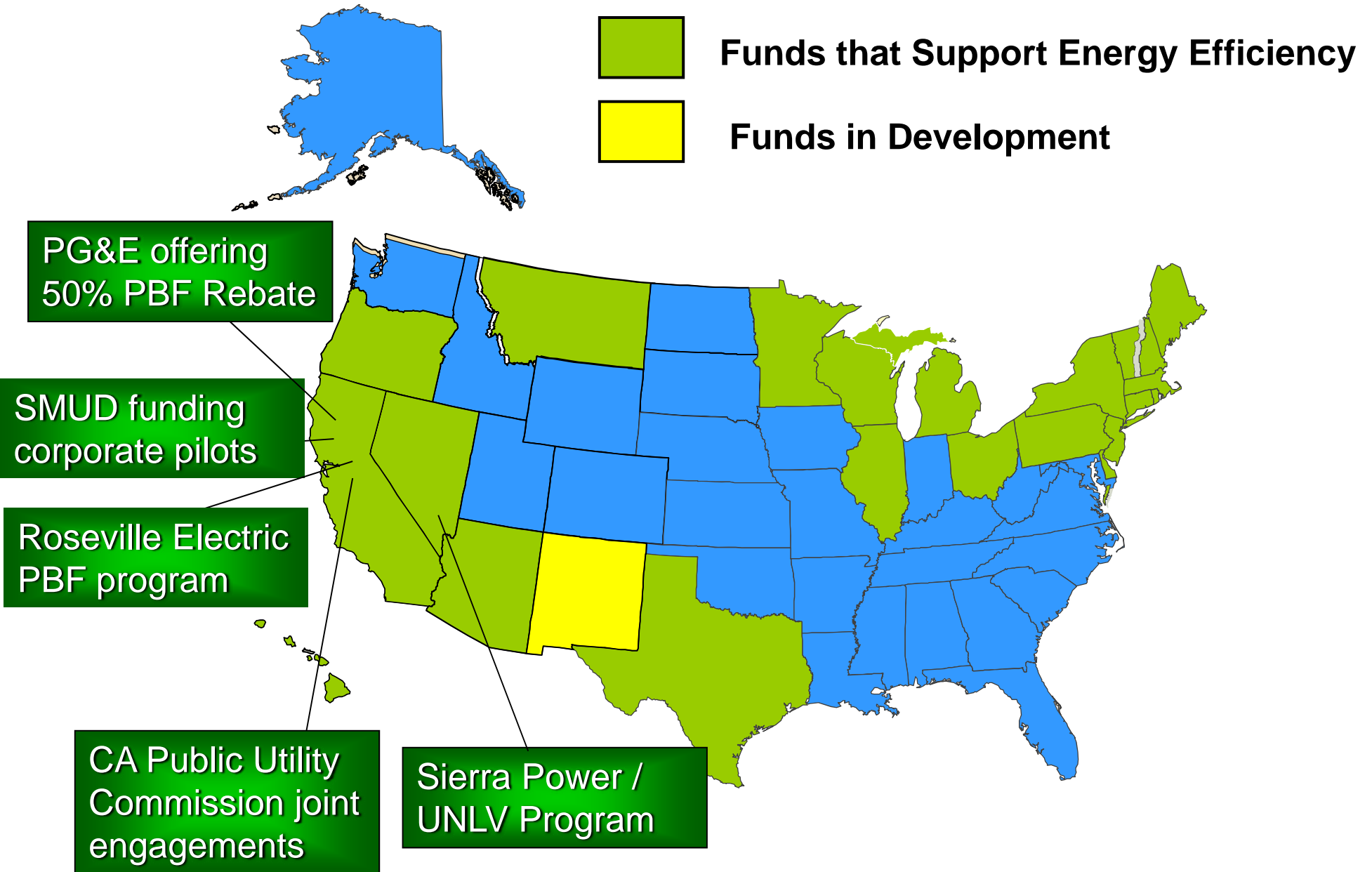


Environment – Layouts Used



SynapSense Engaged with Utilities

22 States have Public Benefit Funds



What Made This Goal Possible?

The Extended Team...

- **VSP Ancillary Members – HR, IT, C-Suite**
- **VSP Company-wide**
- **Vendors – Mechanical, Electrical, Synapsense**
- **Consultants – LEED, Retro-commissioning**
- **Other Partners – USGBC, SMUD**

Where is VSP Now?



VSP was awarded
Platinum Certification!



Questions?

Stephen Blynn-Maintenance & Operations Manager
Vision Service Plan
916.858.5627
StepBl@vsp.com

Thank You!